

# Commander

Version Aug 2013

## Malting Barley

### VARIETY SUMMARY

- Commander is a 'Barley Australia' accredited malting variety
- Mid-season flowering and maturity
- A broadly adapted high yielding variety for all barley growing regions of Australia
- CCN resistant
- Low screening and high retentions
- MR for Powdery mildew (WA)
- NVT trials highlight the excellent yield potential and physical grain quality of Commander



### BREEDING

Commander (trialled as WI3416) was developed by the University of Adelaide Barley Breeding Program with the support of malting and brewing companies through MBQIP, GRDC and Viterra Ltd.



### PLANT CHARACTERISTICS

Commander has a medium plant height and coleoptile length with moderate standability and early vigour. Commander has moderate to high head retention.



### MATURITY

Commander has a mid-season maturity (between Schooner and Gairdner) with sowing times ranging from early-mid May for low rainfall areas to mid-May to early June for higher rainfall areas.



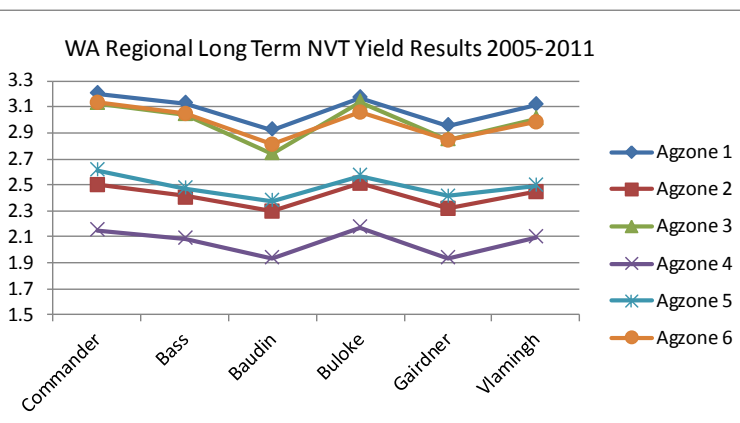
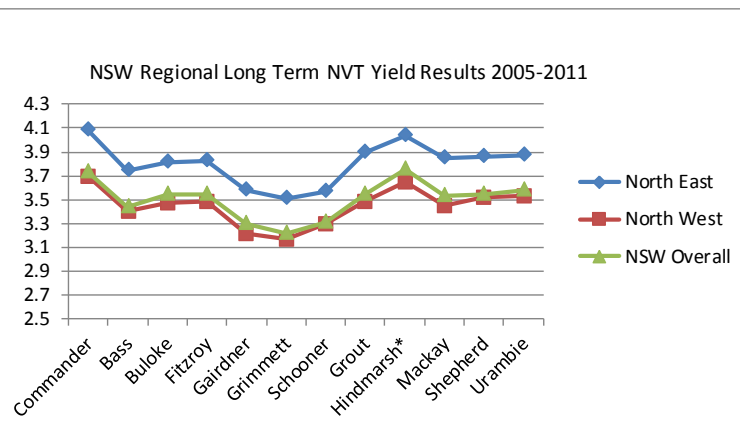
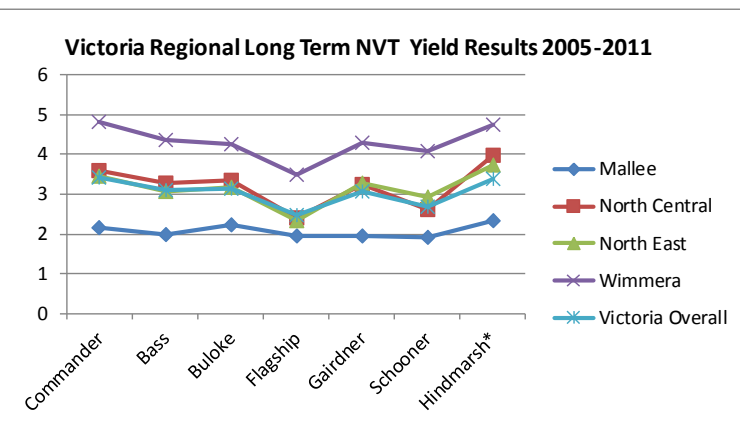
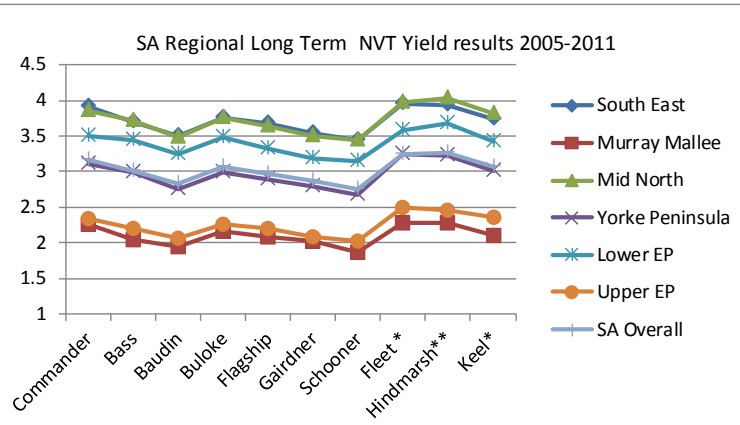
### GRAIN QUALITY

Commander exhibits 0.5-0.7% lower grain protein level. This can help in achieving malting status more readily in lower rainfall environments. Test weights are similar to Buloke and Gairdner and lower than Schooner.



### YIELD

The high yield potential & malting quality benefits of Commander can be maximised from earlier sowing opportunities, while the very good physical grain quality reduces the risks inherent in later sowing.



 **DISEASE AND PEST RESISTANCE**

Commander exhibits a modest but commercially acceptable disease resistance profile. It is significantly weaker than the benchmark disease resistance profiles of Fleet and Flagship. Growers need to monitor crops for disease

**Eastern Australia Disease Profile**

| Variety          | Powdery Mildew | Scald    | Spot Form Net Blotch | Net Form Net Blotch | Leaf Rust | CCN      | BYDV     | Common Root Rot | Black Point |
|------------------|----------------|----------|----------------------|---------------------|-----------|----------|----------|-----------------|-------------|
| <b>Commander</b> | <b>MR</b>      | <b>S</b> | <b>MS-S</b>          | <b>MS</b>           | <b>S</b>  | <b>R</b> | <b>S</b> | <b>MS-S</b>     | <b>S</b>    |
| Buloke           | MR             | MR-MS    | MS-S                 | MR                  | S-VS      | S        | S        | MS              | S           |
| Gairdner         | MR             | #R       | S-VS                 | MR-MS               | MS-S      | S        | MR       | MS-S            | MR          |
| Baudin           | S-VS           | MS-S     | S                    | MS                  | S-VS      | S        | MR       | S               | MS          |

**Western Australia Disease Profile**

| Variety          | MR-MS        | MS-S        | MS        | S        | S-VSp        | R        |  |  |  |
|------------------|--------------|-------------|-----------|----------|--------------|----------|--|--|--|
| <b>Commander</b> | <b>MR-MS</b> | <b>MS-S</b> | <b>MS</b> | <b>S</b> | <b>S-VSp</b> | <b>R</b> |  |  |  |
| Buloke           | MR           | MS          | MS        | MR-MS    | S            | S        |  |  |  |
| Gairdner         | S            | MR-MS       | S         | MR-MS    | S            | S        |  |  |  |
| Baudin           | VS           | MS          | S         | S        | S-VS         | S        |  |  |  |

Disease rating codes: R - Resistant; MR - Moderately Resistant; MS - Moderately Susceptible; S- Susceptible; VS - Very Susceptible; T-Tolerant.

# - these varieties may be susceptible if alternative strain is present.

 **PLANT PROFILE**

| Variety          | Maturity   | Coleoptile Length | Early Vigour    | Early Growth Habit | Tillering Ability | Plant Height  | Straw Strength  | Head Retention  | Boron Leaf Symptoms | Pre-Harvest Sprouting Risk |
|------------------|------------|-------------------|-----------------|--------------------|-------------------|---------------|-----------------|-----------------|---------------------|----------------------------|
| <b>Commander</b> | <b>mid</b> | <b>medium</b>     | <b>moderate</b> | <b>semi erect</b>  | <b>mod-high</b>   | <b>medium</b> | <b>moderate</b> | <b>mod-high</b> | <b>moderate</b>     | <b>moderate</b>            |
| Schooner         | early-mid  | medium            | moderate        | erect              | moderate          | medium        | moderate        | moderate        | moderate            | moderate                   |
| Flagship         | early-mid  | medium            | mod-high        | erect              | mod-high          | medium        | moderate        | mod-high        | mod-high            | high                       |
| Buloke           | early-mid  | short             | mod-high        | erect              | moderate          | medium        | moderate        | moderate        | mod-low             | moderate                   |
| Baudin           | mid-late   | medium            | moderate        | prostate           | high              | short         | good            | mod-high        | moderate            | moderate                   |
| Gairdner         | late       | medium            | mod-low         | prostate           | high              | medium        | moderate        | moderate        | moderate            | mod-high                   |

Commander exhibits a moderate basic vegetative phase and moderate photoperiod sensitivity

 **PLANT BREEDER RIGHTS AND ROYALTIES**

Commander is protected by Plant Breeder Rights, any unauthorised commercial propagation or any sale, conditioning, export, import or stocking of propagating material of this variety is an infringement under the Plant Breeder's Rights Act, 1994.

Growers are allowed to retain seed from production of this variety for their own use as seed only.

An End Point Royalty of \$3.80 per tonne (plus GST), which includes breeder royalties, applies to this variety.

**ACKNOWLEDGMENTS**

Commander was bred by the University of Adelaide with support from growers through the GRDC.



For more information call **Seednet** on **1300 799 246** or visit **www.seednet.com.au**

DISCLAIMER: The material contained in this Fact Sheet is from official sources and is considered reliable. It is provided in good faith and every care has been taken to ensure its accuracy. Seednet does not accept any responsibility for the consequences, which may arise from the acceptance of recommendations or suggestions made.